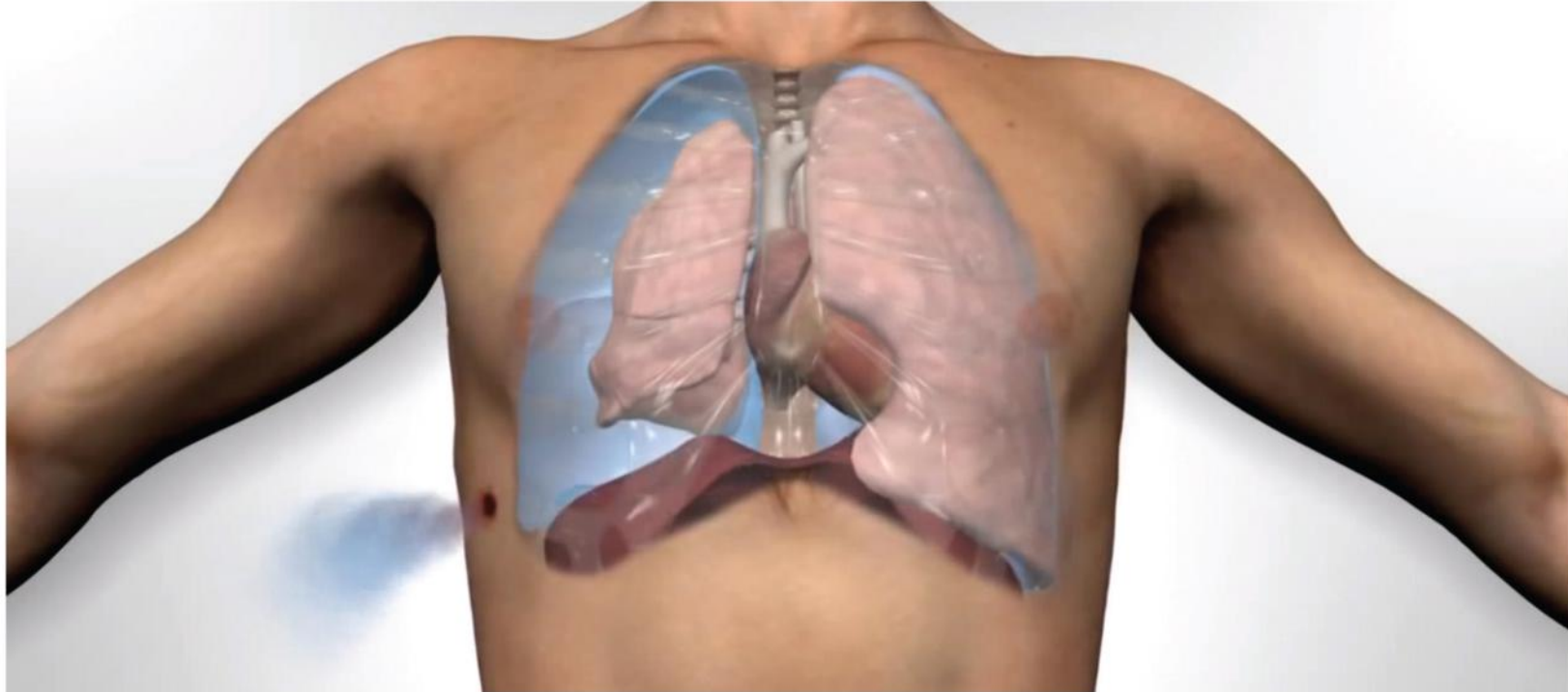


# Collapsed Lung? Drain Easy with Sinapi!



**Key Benefits:**

- Product Safety
- Drainage Efficiency
- Early Patient Mobilization
- Easy Operation
- Cost-Saving

**Key Specs:**

- Silicone Material Tubing
- Schaeffler Valve
- Ball Movement for Air Leak Intensity
- 25ml or less Water to use
- Compact Construction



**Definitely Better Patient Outcome:  
Secure and Safe!**

Official Philippine Distributor:

**WellnessPRO**  
tomorrow's medical devices  
[www.wellnessproinc.com](http://www.wellnessproinc.com)

## PRODUCT SAFETY

- No clamping needed
- No backflow
- Built in suction regulator for both high positive pressure valve & high negativity vent.
- NO exposure to bodily fluids at any time
- Provides feedback on actual suction strength

## DRAINAGE EFFICIENCY

- Minimal dead space (60ml) within collection chamber for faster regeneration of negative intra-pleural pressure during the breathing cycle = earlier catheter removal.
- Very low opening pressure (1cmH2O) of valve for low resistance to flow despite the amount of fluids drained = high efficiency of air or fluid drainage from the chest.
- Confirmed suction action via in-line manually depressed suction bulb = safe disconnection of patient from vacuum source for early mobilization.

## EARLY PATIENT MOBILIZATION

- Light & compact construction for easy carry
- Orient-able in any direction
- Wearable via shoulder sling slot

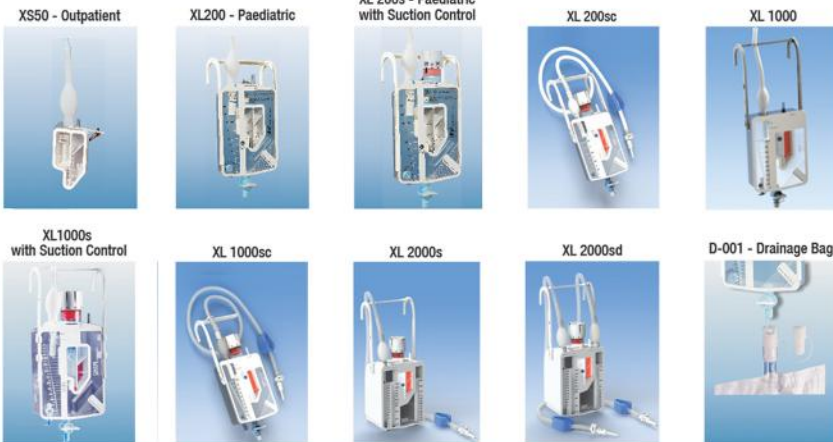
## EASY OPERATION

- Easy set up
- Allows for easy milking of tube
- No fear of backflow
- Drain via built in tap
- Built in bed hooks (for some models)
- Little maneuvers needed to monitor and manage

## COST-SAVING

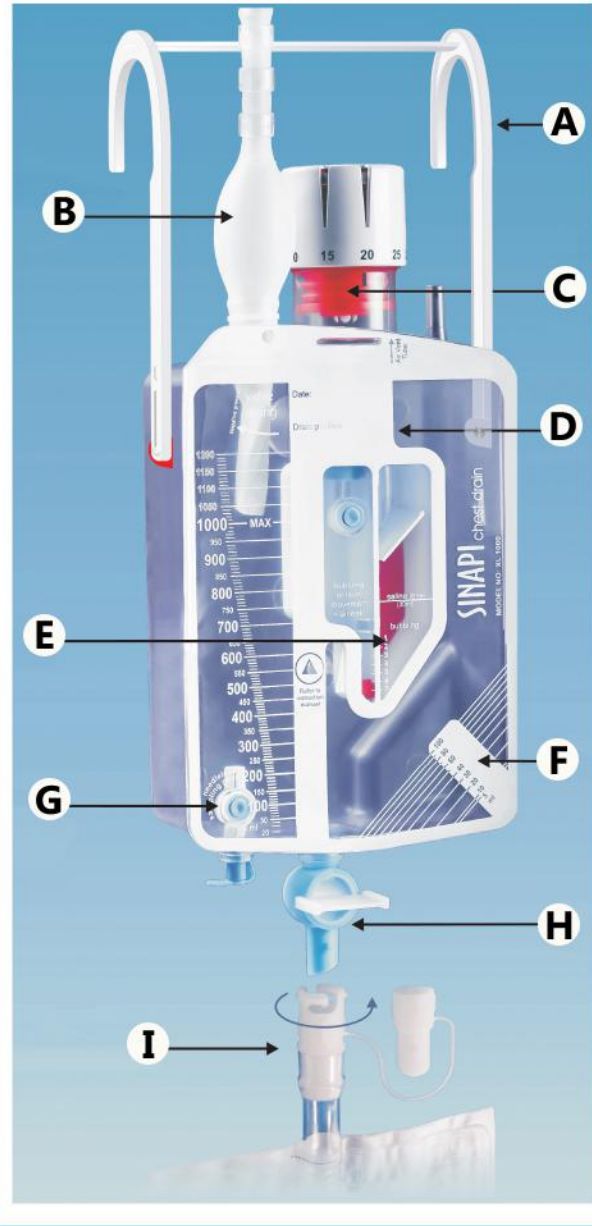
- Only 1 sinapi chest drain unit for patient's hospital stay.
- Evacuates patient's fluids/air efficiently for shorter hospital stay.
- Closed system with amenities for less patient complications.
- Less space is taken up in medical waste containers.

## PRODUCT RANGE:



## FEATURES:

- Compact Hanger
- Suction bulb applies manual suction
- Red bellows provides visible feedback of actual suction applied
- Innovative spillage protection
- Air leak indicator
- Accurate volume measurement
- Needle free sampling port
- Large diameter drainage tap
- Drainage bag with bayonet connector



ACCESSORIES: Stand / Shoulder Sling / Y-Connector / Drainage Bag (D-001)

Seq	Item Code	Product Name / Description	Patient Age	Apt For	To Remove	Holds (ml)	Tube Length (m)	Suction Control	Tube Roller	Inlet No.
1	XS50	Sinapi Mobile Compact Chest Drain for Air Leak Only	Adult/Child	Mobile/Outpatient	Air	50	0.1			1
2	XS100	Sinapi Mobile Chest Drain w/ disposable drainage bag & sling	Adult/Child	Mobile/Outpatient	Air/Fluid	400	0.1			1
3	XL200	Sinapi Pedia Bedside Chest Drain	Child	Bedside	Air/Fluid	400	1.1			1
4	XL200S	Sinapi Pedia Bedside Chest Drain w/ Suction Control	Child	Bedside	Air/Fluid	400	1.1	YES		1
5	XL200SC	Sinapi Pediatric Bedside Chest Drain: standard tube length, suction control, tube roller, negative vent	Child	Bedside	Air/Fluid	400	1.1	YES	YES	1
6	XL1000	Sinapi Adult Bedside Chest Drain w/ extra long tube	Adult	ICU/Trauma	Air/Fluid	1000	1.5			1
7	XL1000S	Sinapi Adult Bedside Chest Drain: Extra long tube, suction control	Adult	ICU/Trauma	Air/Fluid	1000	1.5	YES		1
8	XL1000SC	Sinapi Adult Bedside Chest Drain: double extra long tube, suction control, tube roller, negative vent	Adult	Cardiac	Air/Fluid	1000	1.7	YES	YES	1
9	XL2000S	Sinapi Adult Bedside Chest Drain: double extra long tube, suction control, tube roller, negative vent, double inlet	Adult	Cardiac	Air/Fluid	2250	1.7	YES	YES	1
10	XL2000SD	Sinapi Adult Cardiac Chest Drain: double extra long tube, suction control, tube roller, negative vent, double inlet	Adult	Cardiac	Air/Fluid	2250	1.7	YES	YES	2
11	D001	Disposable Drainage Bag - 1000ml (30 units per inner)	Any	All	Fluid	1000	N/A			

Official Philippine Distributor:

**WellnessPRO**  
tomorrow's medical devices

Unit 808 Richmond Plaza, San Miguel Avenue corner Lourdes St., Ortigas Center Pasig 1605, Philippines  
Telephone #: (02) 636-3580, (02) 633-7867, (02) 633-1931, (02) 477-2650, (02) 637-0930, • Fax #: (02) 636-7542  
Mobile #: (63) 999-887-0250, (63) 922-896-0921 • Technical Service #: (02) 637-0473  
Email: wellnessproinc@gmail.com, jcjuan@wellnessproinc.com

[www.wellnessproinc.com](http://www.wellnessproinc.com)